

**HVACR PRODUCT**  
**DESIGN      FABRICATION      ENGINEERING**  
**INSTALLATION      MAINTENANCE**

**PT. Thermocool Indonesia**

**Delivering Effective HVACR Solutions  
to the Energy Industry Worldwide**



# Our Company



<b>NAME OF COMPANY</b>	<b>: PT. Thermocool Indonesia</b>
<b>DATE OF ESTABLISHED</b>	<b>: 14 April 2010</b>
<b>HEAD OFFICE ADDRESS</b>	<b>: Gedung Graha Sartika Lt.2 Jl. Dewi Sartika No.357 Cawang III, Jakarta Timur</b>
<b>OPERATIONAL OFFICE</b>	<b>: Jl. Mesjid Bendungan No.10-11 Cawang III, Jakarta Timur</b>
<b>WORKSHOP ADDRESS</b>	<b>: Jl. Pinang F16 No.21 Kawasan Delta Silicon 3 Lippo Cikarang - Bekasi</b>
<b>SISTER COMPANY</b>	<b>: PT. Global Persada Abadi PT.Mechatronic Transtec Indonesia PT. St.Morita Industries</b>

# Scope of Business

## I. HVAC PRODUCTS FABRICATION AND ASSEMBLY

Split Air Conditioning

Package Air Conditioning

Rooftop Air Conditioning

Air Handling Units

Condensing Units

Pressurize Unit System

Chiller

Cool Room

Cold Storage

Precision Air Conditioning

Dehumidifier



# OUR BRAND

- THERMOCOOL
- THERMOSAVE

# OUR BUSINESS PARTNER

- SMARDT
- FUJI ELECTRIC
- DAIKIN
- HITACHI
- MITSUBISHI
- EBM PAPS
- BITZER
- ETC

# Scope of Business

## II. HVAC RETROFIT AND SERVICE PLAN

Compressor Overhaul

Retrofit chiller

Retrofit Fin Tube

Retrofit Cooler

Retrofit Refrigerant

## III. OTHERS

HVAC Predesign

Clean Room System

Ducting System

Control System



# Products Area Applications

A photograph of an industrial facility, likely a refinery or chemical plant. In the foreground, there are several large, white, cylindrical storage tanks with small oval windows near the base. Behind them is a complex network of pipes, scaffolding, and structural steel. A tall, thin distillation column is visible in the background. The sky is clear and blue. The overall scene is brightly lit, suggesting daytime.

## I. NON HAZARDOUS AREA

Electronics Industry

Automotive Industry

Food Industry

Pharmaceutical Industry

Office and Residential

Others (non Explosive Area)

## II. HAZARDOUS AREA

Class 1 and 2

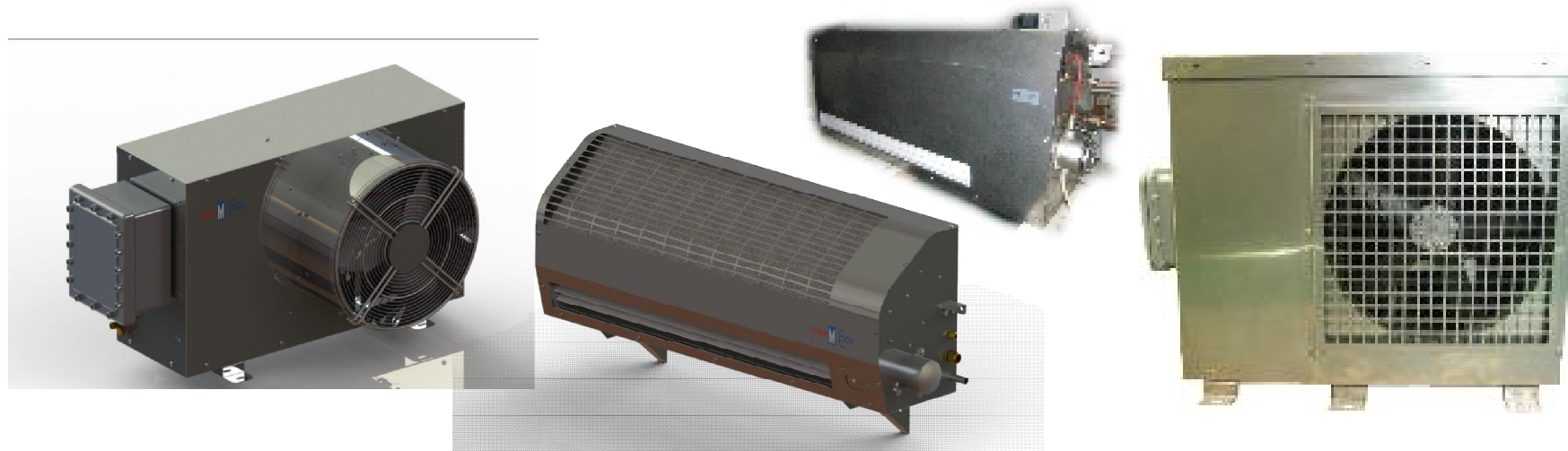
Div I and Div II

Group A, B, C, D, E, F, G

# Hazardous Area Products

## 1. SPLIT AIR CONDITIONING

### Split Wallmount and Split Ceiling



**Thermocool's THCEX Split Wallmount and Ceiling Air Conditioning System are robustly designed and constructed for use in the harsh offshore, marine and petrochemical environment.**

**Materials and components are selected to provide resistance to corrosion, long service life and optimum reliability along with standard of common components across the range to ensure spare parts are always readily available at competitive prices.**



# Split Wallmount Specification

SPECIFICATION	THCW10CT	THCW20CT	THCW32CT	THCW50CT	THCW52CT
Cooling Capacity	10.000 BTU/H	20.000 BTU/H	32.00 BTU/H	50.000 BTU/H	52.000 BTU/H
Outdoor Point Conditions	35 - 37°C	35 - 37°C	35 - 37°C	35 - 37°C	35 - 37°C
Power Supply	1 Phase/208 – 230V/60HZ	1 Phase/ 230V/60HZ	3 Phase/ 460-480V/60HZ	3 Phase/ 460-480V/60HZ	3 Phase/ 460-480V/60HZ
Control Panel	Integrate Control Panel	Integrate Control Panel	Integrate Control Panel	Integrate Control Panel	Integrate Control Panel
Temperature Control	Digital Remote Control	Digital Remote Control	Digital Remote Control	Digital Remote Control	Digital Remote Control
Refrigerant Type	R410A, R134A, R407C	R410A, R134A, R407C	R410A, R134A, R407C	R410A, R134A, R407C	R410A, R134A, R407C
<b>INDOOR UNIT</b>					
Dim Length, mm	810	810	810	890	890
Dim Height, mm	276	276	276	550	550
Dim Depth, mm	300	300	300	300	300
Weight, Kg	22.2	24.5	29.8	34.5	35.8
Casing Material	Stainless Steel	Stainless Steel	Stainless Steel	Stainless Steel	Stainless Steel
<b>OUTDOOR UNIT</b>					
Dim Length, mm	897	897	897	956	956
Dim Height, mm	605	605	698	788	788
Dim Depth, mm	410	410	475	559	559
Weight, Kg	65.7	66.9	78.5	85.5	89.8
Compressor	Hermetic	Hermetic	Hermetic	Hermetic	Hermetic
Casing Material	Stainless Steel	Stainless Steel	Stainless Steel	Stainless Steel	Stainless Steel
<b>AREA CLASSIFICATION</b>					
Hazardous Area Class	Class 1-Zona 1-Group II A	Class 1-Zona 1-Group II A	Class 1-Zona 1-Group II A	Class 1-Zona 1-Group II A	Class 1-Zona 1-Group II A

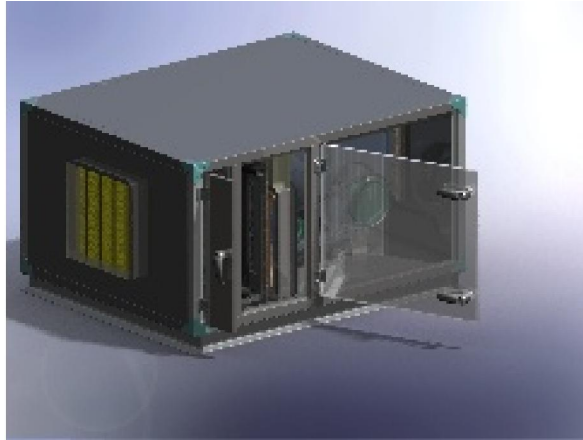
## Split Ceiling Specification

SPECIFICATION	THCC30CT	THCC50CT	THCC52CT	THCC62CT	THCC72CT
Cooling Capacity	30.00 BTU/H	50.000 BTU/H	52.000 BTU/H	62.000 BTU/H	72.000 BTU/H
Outdoor Point Conditions	35 - 37°C	35 - 37°C	35 - 37°C	35 - 37°C	35 - 37°C
Power Supply	3 Phase/460 – 480V/60HZ	3 Phase/460 – 480V/60HZ	3 Phase/460 – 480V/60HZ	3 Phase/460 – 480V/60HZ	3 Phase/460 – 480V/60HZ
Control Panel	Integrate Control Panel	Integrate Control Panel	Integrate Control Panel	Integrate Control Panel	Integrate Control Panel
Temperature Control	Digital Remote Control	Digital Remote Control	Digital Remote Control	Digital Remote Control	Digital Remote Control
Refrigerant Type	R410A, R134A, R407C	R410A, R134A, R407C	R410A, R134A, R407C	R410A, R134A, R407C	R410A, R134A, R407C
<b>INDOOR UNIT</b>					
Dim Length, mm	550	600	600	750	800
Dim Height, mm	350	350	350	350	350
Dim Depth, mm	885	885	885	1150	1150
Weight, Kg	23.5	28.2	29.1	37.9	42.5
Casing Material	Stainless Steel	Stainless Steel	Stainless Steel	Stainless Steel	Stainless Steel
<b>OUTDOOR UNIT</b>					
Dim Length, mm	897	897	897	1100	1100
Dim Height, mm	605	698	698	788	788
Dim Depth, mm	410	475	475	650	650
Weight, Kg	78.5	78.5	79.8	97.2	108.4
Compressor	Hermetic	Hermetic	Hermetic	Hermetic	Hermetic
Casing Material	Stainless Steel	Stainless Steel	Stainless Steel	Stainless Steel	Stainless Steel
<b>AREA CLASSIFICATION</b>					
Hazardous Area Class	Class 1-Zona 1-Group II A	Class 1-Zona 1-Group II A	Class 1-Zona 1-Group II A	Class 1-Zona 1-Group II A	Class 1-Zona 1-Group II A

# Hazardous Area Products

## 2. AIR HANDLING UNITS

### Rooftop Models



- All Electrical Components are UL Approved
- Explosion Proof Overload protection on Motors and Compressors
- Easily Accessible Motor for fast and Convenient Service
- Non Sparking Condenser Fan and Blower designs
- Aluminum Fin and Copper Tube Coils for Maximum Heat Transfer
- Explosion Proof and General Purpose Operational Controls
- Ceiling Assembly Included with Air Filter
- Operation, Maintenance & Installation Manuals Included

# Hazardous Area Products

## 3. AIR COOLED CONDENSING UNITS

### Rooftop Models



- All Electrical Components are UL Approved
- Explosion Proof Overload protection on Motors and Compressors
- Easily Accessible Motor for fast and Convenient Service
- Non Sparking Condenser Fan and Blower designs
- Aluminum Fin and Copper Tube Coils for Maximum Heat Transfer
- Explosion Proof and General Purpose Operational Controls
- Ceiling Assembly Included with Air Filter
- Operation, Maintenance & Installation Manuals Included

## AHU & ACCU Specification

SPECIFICATION	THCA50CT	THCA75CT	THCP100CT	THCP110CT	THCP130CT
Cooling Capacity	50.000 BTU/H	75.000 BTU/H	100.000 BTU/H	110.000 BTU/H	130.000 BTU/H
Outdoor Point Conditions	35 - 37°C	35 - 37°C	35 - 37°C	35 - 37°C	35 - 37°C
Power Supply	3 Phase /460 - 480V/60HZ	3 Phase /460 - 480V/60HZ	3 Phase /460 - 480V/60HZ	3 Phase /460 - 480V/60HZ	3 Phase /460 - 480V/60HZ
Control Panel	Integrate Control Panel	Integrate Control Panel	Integrate Control Panel	Integrate Control Panel	Integrate Control Panel
Temperature Control	Digital Remote Control	Digital Remote Control	Digital Remote Control	Digital Remote Control	Digital Remote Control
Refrigerant Type	R410A, R134A, R407C	R410A, R134A, R407C	R410A, R134A, R407C	R410A, R134A, R407C	R410A, R134A, R407C
<b>AHU UNIT</b>					
Dim Length, mm	2500	2500	3150	3150	3150
Dim Height, mm	950	950	950	950	950
Dim Depth, mm	1250	1250	1250	1250	1250
Weight, Kg	65.5	70.2	95.4	100.2	120.6
Casing Material	Stainless Steel	Stainless Steel	Stainless Steel	Stainless Steel	Stainless Steel
<b>AIR COOLED CONDENSING UNIT</b>					
Dim Length, mm	1050	1050	1460	1460	1460
Dim Height, mm	950	950	950	950	950
Dim Depth, mm	800	800	1250	1250	1250
Weight, Kg	62.5	75.1	99.5	112	130.8
Compressor	Hermetic	Hermetic	Hermetic	Hermetic	Hermetic
Casing Material	Stainless Steel	Stainless Steel	Stainless Steel	Stainless Steel	Stainless Steel
<b>AREA CLASSIFICATION</b>					
Hazardous Area Class	Class 1-Zona 1-Group II A	Class 1-Zona 1-Group II A	Class 1-Zona 1-Group II A	Class 1-Zona 1-Group II A	Class 1-Zona 1-Group II A

# Hazardous Area Products

## 4. ROOM PRESSURIZATION SYSTEM

### Outdoor Models



- All Electrical Components are UL Approved
- Explosion Proof Overload protection on Motors and Compressors
- Easily Accessible Motor for fast and Convenient Service
- Non Sparking Condenser Fan and Blower designs
- Aluminum Fin and Copper Tube Coils for Maximum Heat Transfer
- Explosion Proof and General Purpose Operational Controls
- Ceiling Assembly Included with Air Filter
- Operation, Maintenance & Installation Manuals Included

# PROJECT

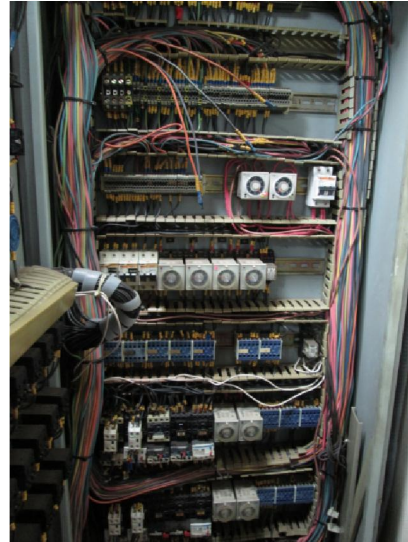
## 1. COOL ROOM - PETROCHINA



- Location : Irian Jaya - Indonesia
- Year of project : 2009
- Scope & Suplly : Condensing Unit Cap. 120.000 BTU/H
- Indoor
- Electrical Panel Control
- Installation & Commisioning

# PROJECT

## 2. HVAC PANEL CONTROL - UNOCAL



- **Location** : Irian Jaya - Indonesia
- **Year of project** : 2009
- **Scope & Supply** : Condensing Unit Cap. 120.000 BTU/h
- **Indoor**
- **Electrical Panel Control**
- **Installation & Commisioning**



# PROJECT

## 3. AHU - PETROCHINA



- Location : Irian Jaya - Indonesia
- Year of project : 2011
- Scope & Suplly : AHU Cap 15 TR, 20 TR, 25 TR
- Ducting System
- Electrical Panel Control
- Installation & Commisioning

# PROJECT

## 4. SPLIT AC EXPLOSION PROOF - CNOOC



- **Location** : Irian Jaya - Indonesia
- **Year of project** : 2012
- **Scope & Suplly** : Split AC Explotion Proof Cap 2 TR, 3 TR, 5 TR
- **Electrical Panel Control**
- **Installation & Commisioning**

Thank You

