

## COMPANY PROFILE

# UMERSON

**PT. UMERSON WAMATETSU TECHNOSMART**  
**“Fabrication, Machining and Engineering”**

**Address :**

**Jl. Raya Simpangan No. 212, Pamahan, Jati Reja  
Cikarang Timur, Bekasi 17530, West Java – INDONESIA  
Phone : +62 21 44691261 ; Facs : +62 21 44691268  
E-mail : [pt.umerson@gmail.com](mailto:pt.umerson@gmail.com)**

# Daftar Isi

- Tampak Bangunan
- Struktur Organisasi
  - Data Karyawan
- Peralatan / Fasilitas
  - Produk
- Kelengkapan Mesin dan alat kerja
  - Data Costumer

# Tentang Umerson :

Kami PT. Umerson Wamatetsu Technosmart berdiri pada tahun 2009 di Kawasan Industri Jababeka 2, dimana kami terus tumbuh dan berkembang sampai saat ini sebagai perusahaan yang bergerak di bidang Fabrikasi, Machining dan Engineering. Dan akan terus berkiprah menciptakan Produk dan layanan yang dibutuhkan oleh Costumer kami.

## **Misi :**

- Menempatkan kepuasan pelanggan sebagai prioritas utama
- Membuat produk yang baik dan bermanfaat dengan harga yang pantas

**Visi :** MENJADI PERUSAHAAN MANUFACTURING  
YANG KUAT DI TINGKAT NASIONAL

# Budaya Perusahaan :

- Jujur
- Kerja Keras
- Kreatif

**Motto : Bekerja dengan Sepenuh Hati**

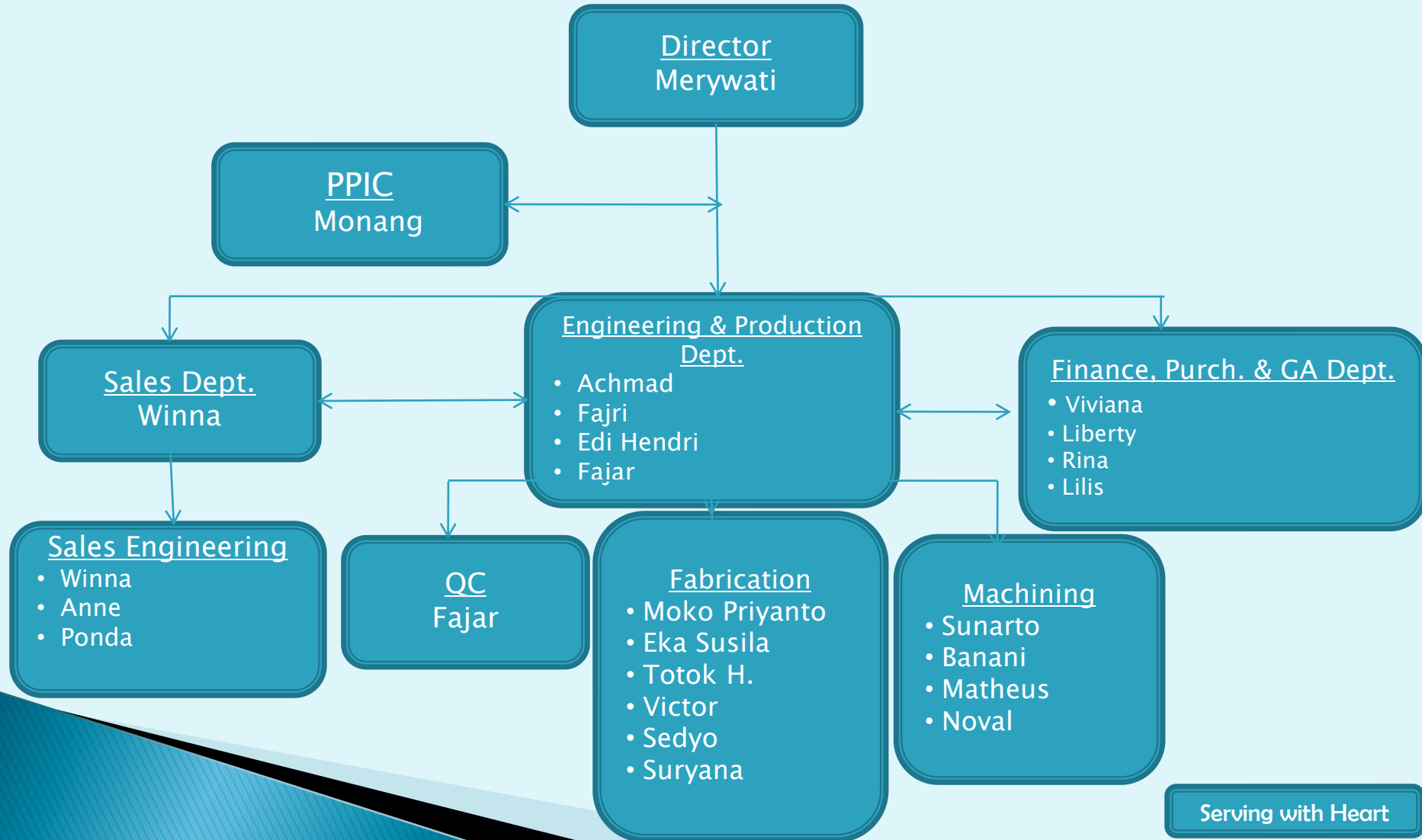
# Tampak Bangunan



UMERSON

ORGANIZATION CHART

PT. Umerson Wamatetsu Technosmart



Serving with Heart

No	Description	Position	Department
1.	<u>Management</u> Merywati	Director	CEO
2.	<u>PPIC Dept.</u> Monang	PPIC	PPIC
3.	<u>Sales Department</u> Winna	Sales Engineer	Sales
4.	Ponda	Sales Engineer	Sales
5.	Anne	Sales Administrasi	Sales
6.	<u>Engineering &amp; Production Dept.</u> Ahmad	Engineering	Engineering
7.	Edi Hendri	Engineering	Engineering
8.	Fajri	Engineering	Engineering
9.	Fajar	Engineering	Engineering
10.	Moko Priyantoro	Fabrication	Production
11.	Suryana	Fabrication	Production
12.	Eka Susila	Fabrication	Production
13.	Sedyo	Fabrication	Production
14.	Achmad Sofian	Fabrication	Production
15.	Juli	Fabrication	Production
16.	Dede	Fabrication	Production
17.	Yanto	Fabrication	Production
18.	Totok	Fabrication	Production
19.	Victor	Fabrication	Production
20.	Sunarto	Machining	Production
21.	Banani	Machining	Production
22.	Matheus	Machining	Production
23.	Noval	Machining	Production
24.	Adang	Machining	Production
25.	Maman	Machining	Production
26.	<u>Finance, HRD &amp; GA Dept.</u> Viviana	Accounting Staff	Finance, Purch, GA
27.	Rina	Purchaser	Purchasing
28.	Janri	HR & GA	Purchasing
29.	Asido Tambunan	Satpam	HR & GA
30.	Deni Ardyansah	Satpam	HR & GA
31.	Gandung Puji	Satpam	HR & GA
32.	<u>Quality Control</u> Fajar	QC	QC



No.	Description	Quantity	Condition	Status
A	<b>Office Building &amp; Workshop</b>	1 unit	Good	Owned
B	<b><u>Fabrication &amp; Machining Equipment :</u></b>			
1	Lathe Machine, 1 Meter	2 Unit	Running	Owned
2	Lathe Machine, 3 Meter	1 Unit	Running	Owned
3	Milling Machine	1 Unit	Running	Owned
4	Fraise Machine	1 Unit	Running	Owned
5	Scrap Machine, 630 mm	1 Unit	Running	Owned
6	Grinding Machine	1 Unit	Running	Owned
7	Shearing Machine	1 Unit	Running	Owned
8	Bending Machine	1 Unit	Running	Owned
9	Press Machine, 100 Ton	1 Unit	Running	Owned
10	Welding Machine	10 Unit	Running	Owned
11	Drill Re-Sharpening Machine	2 Unit	Running	Owned
12	Endmill Re-Sharpening Machine	2 Unit	Running	Owned
13	CNC Lathe Machine	1 Unit	Running	Owned
14	CNC Bubut Machine	1 Unit	Running	Owned
15	CNC Milling Machine/Machining Center	1 Unit	Running	Owned
16	Wire Cut Machine	1 Unit	Running	Owned
17	Surface Grinding	1 Unit	Running	Owned
18	Spot Welding	1 Unit	Running	Owned
19	Band Saw	1 Unit	Running	Owned
20	Punching Machine	1 Unit	Running	Owned
21	Band Saw Grind Down Machine	1 Unit	Running	Owned
22	Aluminium Welding Machine	1 Unit	Running	Owned
C	<b><u>Office Equipment :</u></b>			
1	Personal Computer & Printer	5 Set	Good	Owned
2	Laptop	4 Set	Good	Owned
3	Vehicle	4 Unit	Good	Owned
4	Motor Cycle	7 Unit	Good	Owned

## Our Product & Project :



**Material Casting Trolley**



**Production Table**



**Corong Yokai**



**Stainless Wire Pallet**



**Roller Conveyor**



**Hand Lift Roller Conveyor**



Rack Carrier



Conveyor Roller



Water Tank



Trolley Roller Conveyor



Electrical Box Panel



Baritori Table



Pallet Mesh



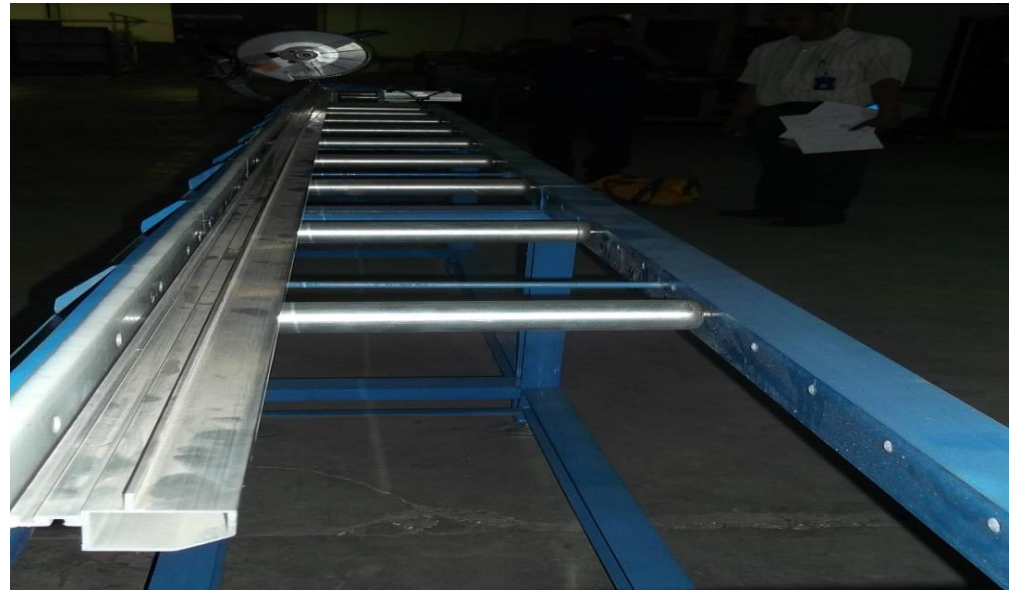
**Trolley**



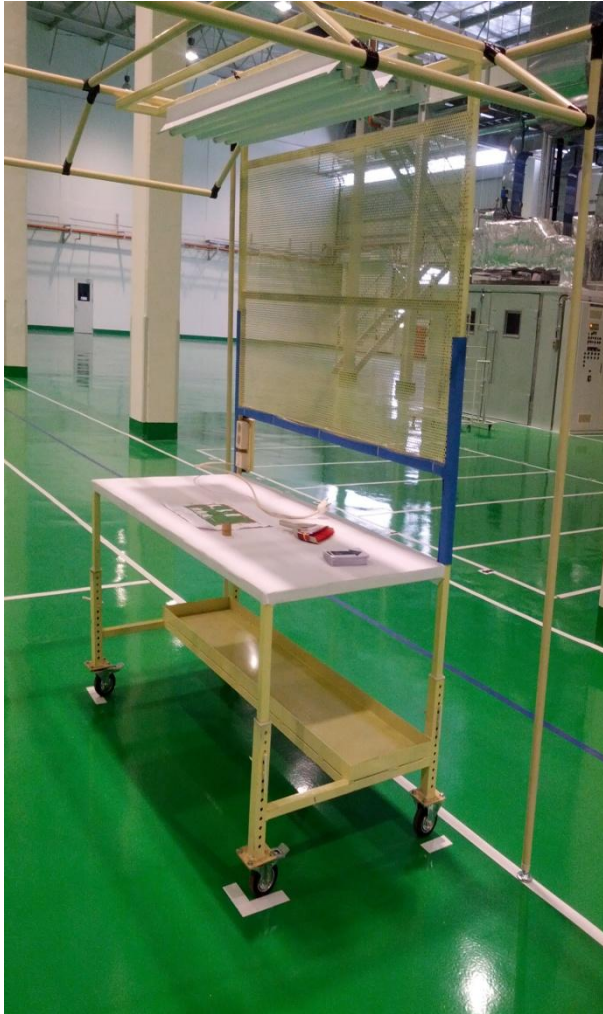
**Trolley**



**Working Table**



**Conveyor Roller**



**Inspection Table**



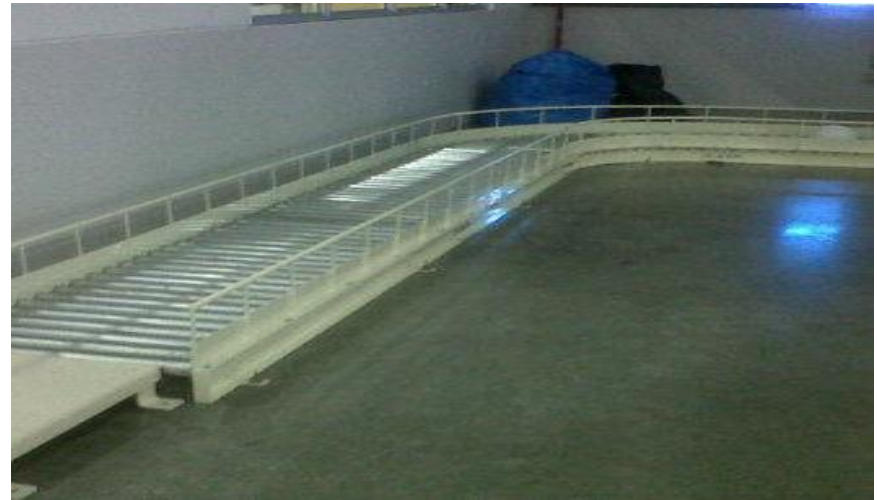
**Trolley**



**Cabinet**



Conveyor Belt



Conveyor Roller



Chain Conveyor



Roller Conveyor Pop Up System



**Automation  
Conveying System**



**Automation  
Conveying System**



**Roller Conveyor**



**Belt Conveyor with  
Table**





**Steel Box**



**Pallet Box**



**Cover Sprocket**



**Inspection Table**



**Jig Stand**



**Collar**



**Shimbong**



**Gas Valve**



**Pin**



**Piping Plugger Carburator Jig**



**Outer & Inner Strap**



**Key Parallel**



**LDD Shaft**



**Holder O-ring**



**Rebuild Jig**



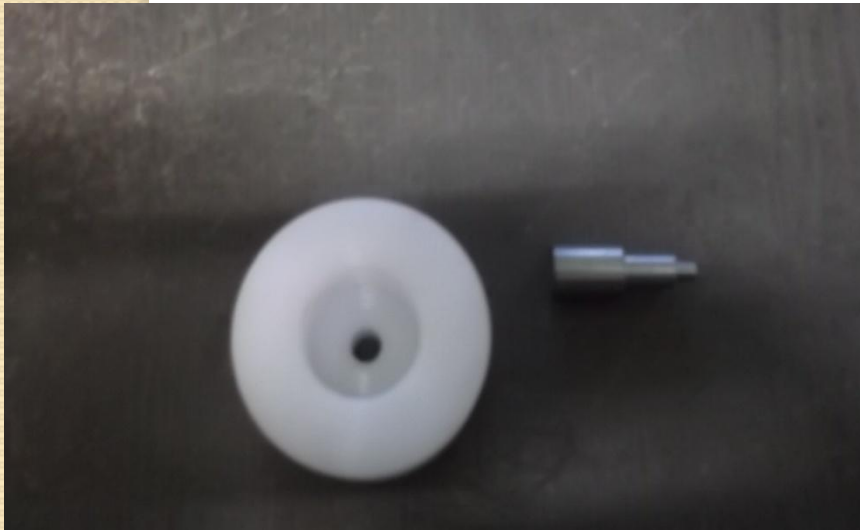
**Burner Tip**



**Tabung 151**



**Handle**



**Nylon & Pin**



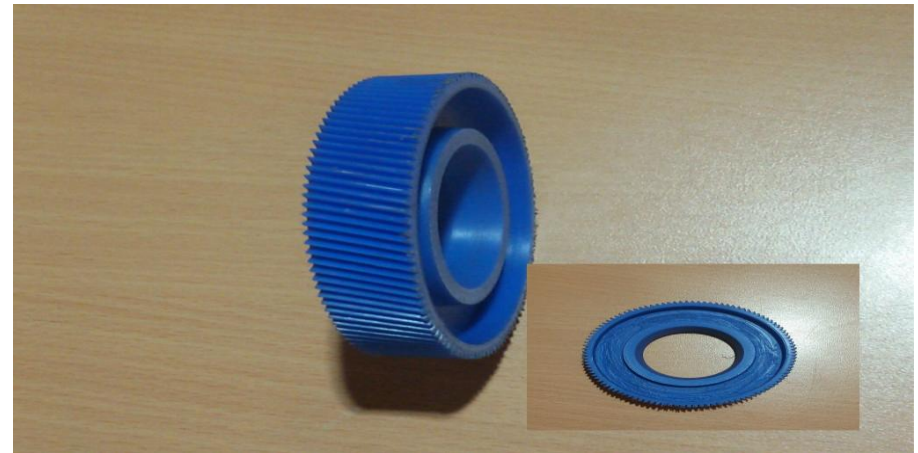
**Shaft**



**Jig Double / Single Insert**



**Flange Cutter**



**Gear**

## Kelengkapan Mesin dan Alat Kerja :



Mesin CNC Milling ATC

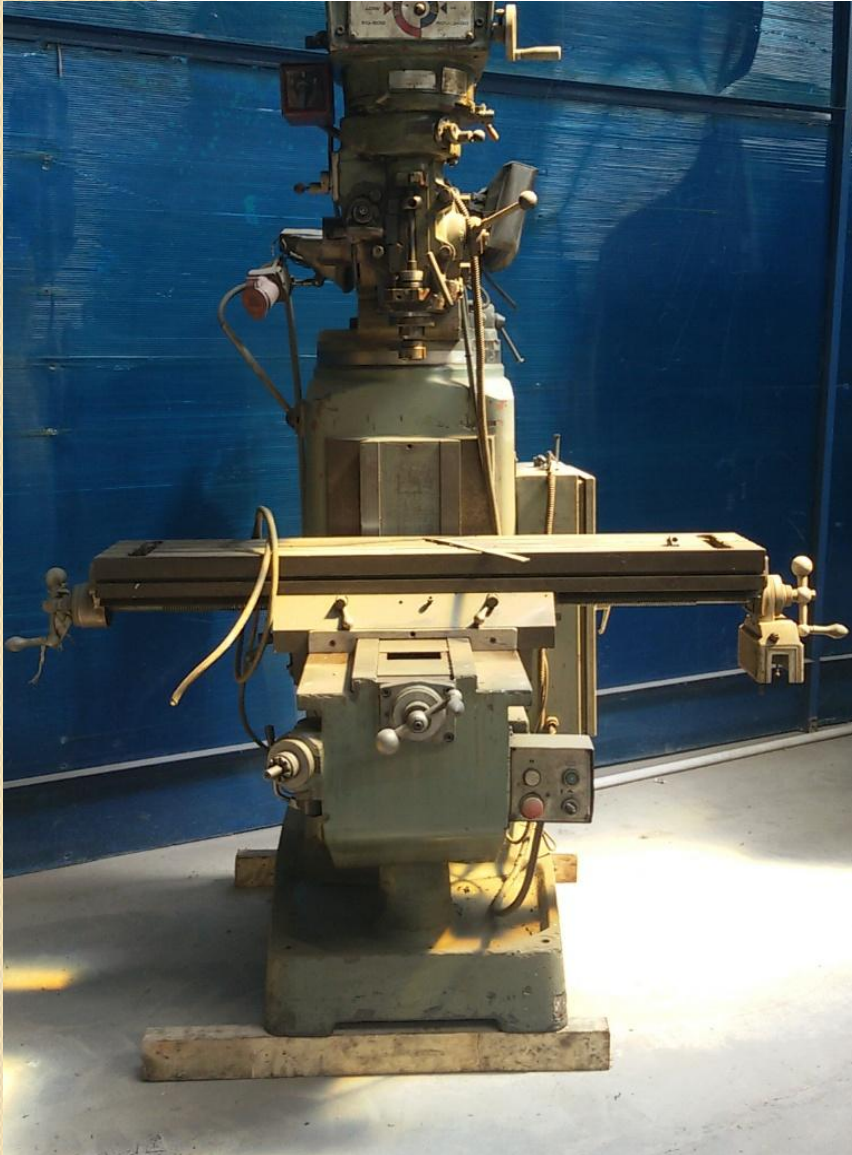
Mesin CNC Lathe



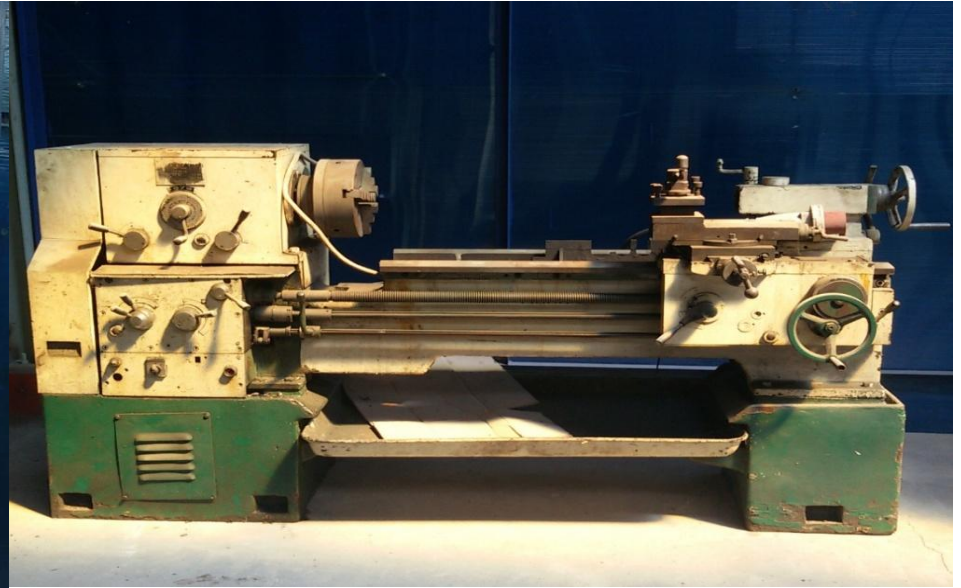
**Mesin CNC Bubut**



**Mesin CNC Milling Non  
ATC**



**Mesin Fraise Milling Manual**



**Mesin Bubut Manual**



**Mesin Band Saw**





**Mesin Stamping**



**Mesin Re - Grinding Tool**



**Mesin Scrap**



**Mesin Wire Cut**



**Mesin Turet**



**Mesin Re- Grinding Saw  
Blade**



**Mesin Surface Grinding**



**Mesin Re-Grinding Endmill dan Drill**



**Mesin Manual Lathe**



**Mesin Milling Manual**



**Mesin Bubut Manual**



**Mesin Bending / Bengkok  
(Plate)**



**Mesin Shearing / Potong  
(Plate)**



**Mesin Welding Pallet Mesh**



**Mesin Spot Welding**



**Mesin Punching**



**Mesin Coak**



**Mesin Las Aluminium**



**Mesin Las**



**LIST OF CUSTOMER**

<b>No</b>	<b>Customer</b>
1.	<b>PT. PINDAD (Persero)</b>
2.	<b>PT. Komatsu Undercarriage Indonesia</b>
3.	<b>PT. ToyoBesQ Precision Parts Indonesia</b>
4.	<b>PT. Taiho Nusantara</b>
5.	<b>PT. Honda Precision Part Manufacturing</b>
6.	<b>PT. Yamaha Motor Parts Manufacturing Indonesia</b>
7.	<b>PT. Mandom Indonesia</b>
8.	<b>PT. Narumi Indonesia</b>
9.	<b>PT. NSK Warner Indonesia</b>
10.	<b>PT. Procter &amp; Gamble</b>
11.	<b>PT. Granitoguna Building Ceramics</b>
12.	<b>PT. Kanefusa Indonesia</b>
13.	<b>PT. Wavin Duta Jaya</b>
14.	<b>PT. Frigoglass Indonesia</b>
15.	<b>PT. Kohwa Indonesia</b>
16.	<b>PT. Sakae Riken Indonesia</b>

# UMERSON

Serving with heart